

NOTES :

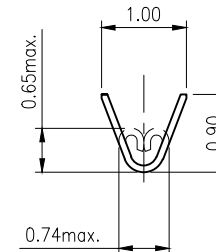
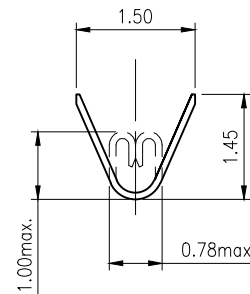
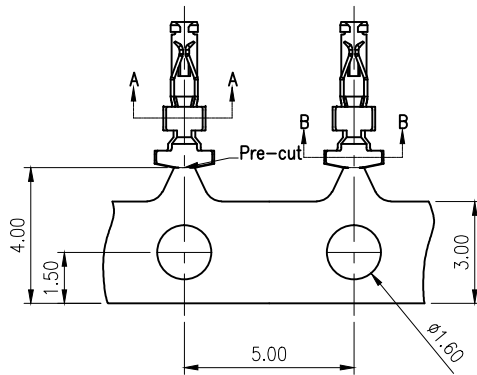
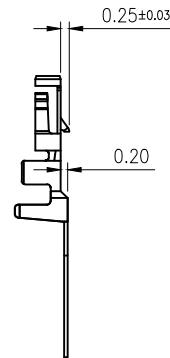
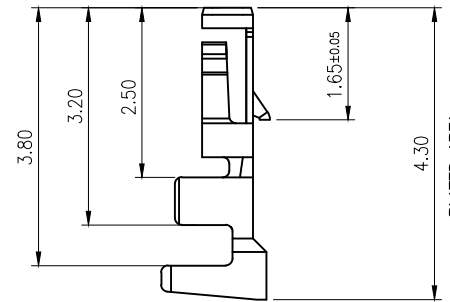
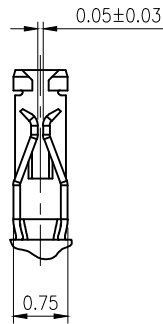
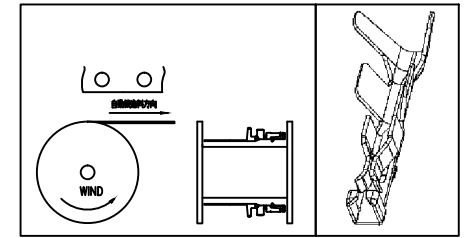
1. MATERIAL IS COPPER ALLOY (T=0.10mm)
2. PLATING : 50u" MIN NICKEL UNDER PLATING OVER ALL
 - 0:120u"MIN Tin-LEAD ON PLATED AREA
 - 1: GOLD FLASH 1u" MIN. ON PLATED AREA
 - N: 120u"MIN MATT TIN ON PLATED AREA
 - C:15u"MIN GOLD ON PLATED AREA
 - T:10u"MIN GOLD ON PLATED AREA
 - A:3u"MIN GOLD ON PLATED AREA
 - D:30u"MIN GOLD ON PLATED AREA

3. WIRE RANGE: SUITABLE FOR
 - UL1571 AWG#28 OD=0.8mm
 - UL1571 AWG#30 OD=0.7mm
 - UL1571 AWG#32 OD=0.41mm

4. CURRENT RATING: 1AMPERES (PER PIN)
5. CRIMPING SPEC. PLS. REFER to PS-88252-T;
6. CRIMPING TOOLING REF.:

- A. CONDUCTOR CRIMPIN: W=0.65mm(REF.)
- B. INSULATOR CRIMPING: W=0.75mm(REF.)

7. AFTER CRIMPING, CONTROL TERMINAL LENGTH: 4.5mm MAX.



P/N Legend

88252-00 X X

- Plating
 - 0: Tin-Lead
 - 1: Gold Flash
 - N: Matt Tin(Lead Free)
 - C: 15u"MIN GOLD
 - T: 10u"MIN GOLD
 - A: 3u"MIN GOLD
 - D: 30u"MIN GOLD
- Packing
 - 0:Reel

QUALITY SYMBOLS MAJOR CRITICAL	DRAWN BY	DATE	
	YanJinXiu	'22/05/24	
GENERAL TOLERANCES (UNLESS SPECIFIED)	CHECKED BY	DATE	TITLE 1.0 mm pitch WTB Crimping Terminal
	BRAVE	'22/05/24	
X. ±0.5 .X ±0.25 .XX ±0.15 .XXX ±0.1 ANGLES ±2°	APPROVED BY	DATE	DWG NO. 88252-00XX
	BRAVE	'22/05/24	
UNITS		SIZE	A4
SCALE	1:5	SHEET NO.	1 OF 1
		REV	F
		PART NO.	SEE NOTES